



KNORR & BRAKE COMPONENTS

CATALOGUE

CURRENT AS OF AUGUST 2024



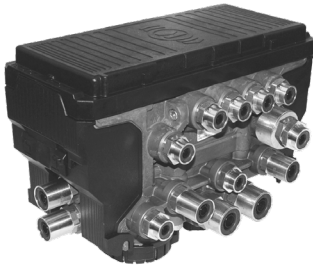


TABLE OF CONTENTS

1	EBS Brake Modules / Sensors
2	EBS Main Cables
3	ABS Brake Modules / Sensors
4	ABS Main Cables & Harness / Trailer Road Train Module
5	Plugs, Sockets & Suzi Coils
6	Suzi Coils / Couplings
7	Ilvi Electronic Intelligent Leveling Control System Air Suspension Only
8	Ilvi Electronic Intelligent Leveling Control System Air Suspension Only
9	Ilvi Electronic Intelligent Leveling Control System
10	MLSF Mechanical Load Sensing Function
11	MLSF Mechanical Load Sensing Function
12	MLSF Mechanical Load Sensing Function / Pneumatic Ride Height Valves
13	Park Shunt & Yard Release Valves / Ratio Valve
14	Spring Break Control Valve / Line Filters / Charging Vavles
15	Relay Valves

BRAKE SYSTEMS

EBS BRAKE MODULES



TEBS G2.1 BRAKE MODULE

CODE	179993
DETAILS	Same as G2.0 but now has an aluminium block fitted with Anti Compounding.
KNORR CODE	K019319V06N50



TEBS G2.2 BRAKE MODULE

CODE	189022
DETAILS	No ports out the side. All ports now out the front of the ECU.
KNORR CODE	K110612V03N49



THIRD MODULE

CODE	189023
DETAILS	No ports out the side. All ports now out the front of the ECU.
KNORR CODE	K027900V02N00

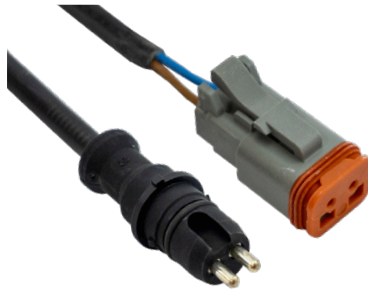
BRAKE SYSTEMS

EBS SENSORS



TIM MODULE SENSOR EXTENSIONS

CODE	170571
DETAILS	A TIM module can be fitted to an G2.X system and is commonly fitted to MTE Trailers. This module is connected to the diagnostic port.
KNORR CODE	CV1103



WHEEL SPEED SENSOR EXTENSIONS

(Example photo, all look similar).

CODE	DETAILS
170572	3m
KNORR	K0278323000
300258	4m
KNORR	K0278324000
179995	6m
KNORR	I1367566000



WHEEL SPEED SENSOR EXTENSIONS

(Example photo, all look similar).

CODE	DETAILS
170222	3m
KNORR	I1367563000
170226	10m, to go to front ABS sensors.
KNORR	I13675610000

EBS MAIN CABLES



STOP LIGHT BACKUP CABLE

CODE	189020
DETAILS	G2.2 twin core stop light backup for diagnostic harness.
KNORR	K002280N00



MAIN POWER CABLE

CODE	189024
DETAILS	Power Cable open end 15mtrs.
KNORR	06093



SPLITTER CABLE

CODE	179925
DETAILS	G2.0, G2.1 Diagonistic splitter cable.
KNORR	K027815



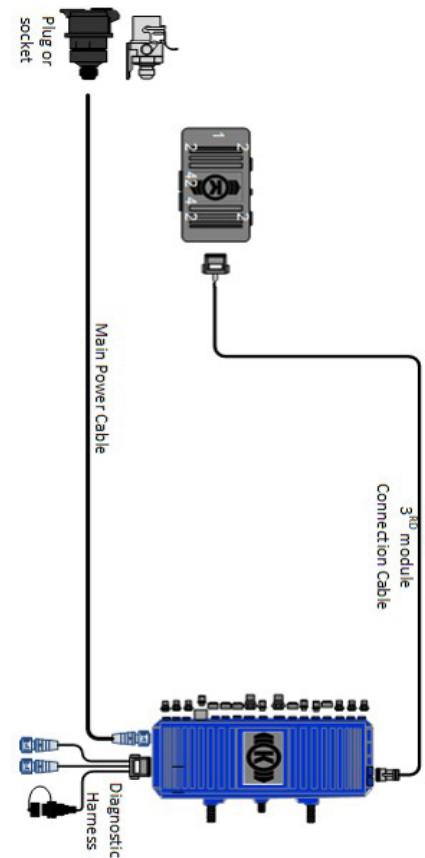
THIRD MODULE CONNECTION CABLE

CODE	DETAILS
173638	12m Connection Cable.
KNORR	CV3372



DIAGNOSTIC CABLE

CODE	DETAILS
189019	G2.2 ILVL & D iagnostic cable.
KNORR	K097070N00
179003	G2.2 Diagnostics harness w/ stop light backup.
KNORR	K027869N00



BRAKE SYSTEMS

ABS BRAKE MODULES



KB4TA ABS BRAKE MODULE

CODE	170412
DETAILS	Used in spring suspended trailers.
KNORR	K004236



THIRD MODULE

CODE	DETAILS
170596	3rd Modulator
KNORR	I137091N00

BRAKE SYSTEMS

ABS SENSORS



SPECIFICATIONS (in order from left to right, as above).

CODE	050395	50506	61790
DETAILS	Alion 90° ABS Sensor.	Wabco 90° ABS Sensor, 1m Tall.	Alion Straight ABS Sensor.

BRAKE SYSTEMS

ABS MAIN CABLES & HARNESS



MAIN POWER CABLE

CODE	DETAILS
170428	17.5m
KNORR	K002289
170595	Connection cable, 10m, pins to be inserted into diagnostic harness.
KNORR	K002276N00



DIAGNOSTIC HARNESS

CODE	DETAILS
170594	For KB4TA
KNORR	K010838N00



ABS TRAILER INVERTER

CODE	DETAILS
170570	12-24V with bayonet plugs.

BRAKE SYSTEMS

TRAILER ROAD TRAIN MODULE



PNEUMATIC PRESSURE TRANSDUCER

CODE	DETAILS
170592	Pressure Transducer
KNORR	5005758



PRESSURE TRANSDUCER HARNESS

CODE	DETAILS
170593	Transducer Harness
KNORR	CV3239



TRM UNIT & DUST CAP

CODE	DETAILS
179900	Dust Cap for TRM
KNORR	K027817N00
170590	B-Train Unit
KNORR	K036198V03N00



FEMALE TO FEMALE

CODE	DETAILS
179907	0.5m Power Cable
KNORR	O8020
170591	8m TRM Power Cable
KNORR	O8021



EBS SOCKET TO FEMALE BAYONET

CODE	DETAILS
170881	4m TRM power cable
KNORR	O6087

BRAKE SYSTEMS

PLUGS, SOCKETS & SUZI COILS



SPECIFICATIONS (in order from left to right, as above).

CODE	170255	434124	170254	170022
DETAILS	24V Crimp Type Terminals.	24V Screw Type Terminals.	12V Crimp Type Terminals.	12V Crimp Type Terminals.



**NARVA 12/24V
7 PIN EBS PLUG**

CODE	170046
DETAILS	EBS Plug, Multi-Volt, Screw Type.



**NARVA 24V ABS/EBS
7 PIN FEMALE SOCKET**

CODE	170047
DETAILS	EBS Socket, Multi-Volt, Screw Type.



EBS DIAGNOSTIC TESTER

CODE	170256
DETAILS	Multi-Volt, EBS Diagnostic tester.



MULTIVOLT EBS PLUG

(in order from left to right, as above).

CODE	170239	170224
DETAILS	Crimp Type Terminals.	Screw Type Terminals.



**MULTIVOLT
EBS ABS SUZI COIL**

CODE	DETAILS
170044	4.5m
171252	5.2m



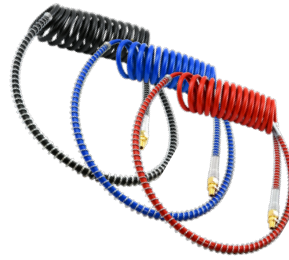
**RED & BLUE
SUZI COIL SET**

CODE	180190
DETAILS	4m Long with Short Tail.



**RED & BLUE
SUZI COIL SET**

CODE	180140
DETAILS	5m Long with Short Tail. Commonly used on house trailers.



**SUZI COIL TRIO
LONG TAIL SET**

CODE	180170
DETAILS	Red, blue and black Suzi Coil Set with long tails.



YELLOW SUZI COIL

CODE	180134
DETAILS	4m Long.
CODE	180607
DETAILS	5m Long.

**BRAKE PARTS
COUPLINGS**



**DUOMATIC TRUCK
BODY FEMALE**

CODE	170031	DETAILS	Wabco
-------------	---------------	----------------	-------

When used on the front of a semi trailer internal valves must be removed or drilled.

Wabco P/N:
452/802/00/0



**DUOMATIC TRAILER
TAIL MALE**

CODE	170026	DETAILS	Wabco
-------------	---------------	----------------	-------

Duomatic Trailer 1/4 NPT.

Wabco P/N:
452/804/001/0

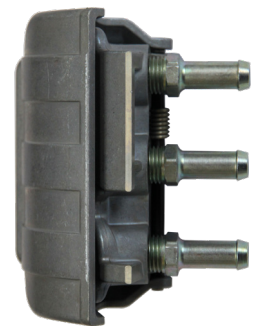


**TRIOMATIC TRUCK
BODY FEMALE**

CODE	170041	DETAILS	Wabco
-------------	---------------	----------------	-------

When used on the front of a semi trailer internal valves must be removed or drilled.

Wabco P/N:
452/806/000/0



**TRIOMATIC TRUCK
BODY MALE**

CODE	170036	DETAILS	Wabco
-------------	---------------	----------------	-------

Triomatic Trailer 1/2.

Wabco P/N:
452/808/002/0

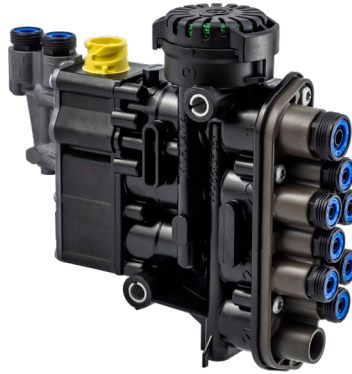
BRAKE SYSTEMS

ILVL ELECTRONIC INTELLIGENT LEVELING CONTROL SYSTEM AIR SUSPENSION ONLY



ILVL PNEUMATIC PUSH BUTTONS

CODE	DETAILS
170583	Manual Backup
KNORR	K064890N00



ILVL VALVE

CODE	DETAILS
170581	Pneumatic Backup.
KNORR	K058032N00



G2.2 ELECTRONIC SENSOR LINKAGE KIT

CODE	DETAILS
170582	120-240mm, Comes with Rubber Link.
KNORR	K095917N00



G2.2 ILVL RIDE HEIGHT SENSOR

CODE	DETAILS
732525	Similar to sensor used for MLSF. Is it on Air Suspension? Yes correct sensor. No go to MLSF page.
KNORR	K025259N00



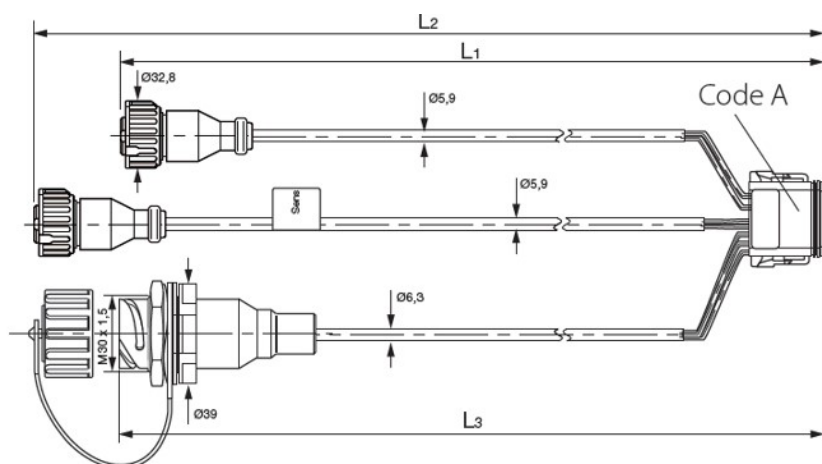
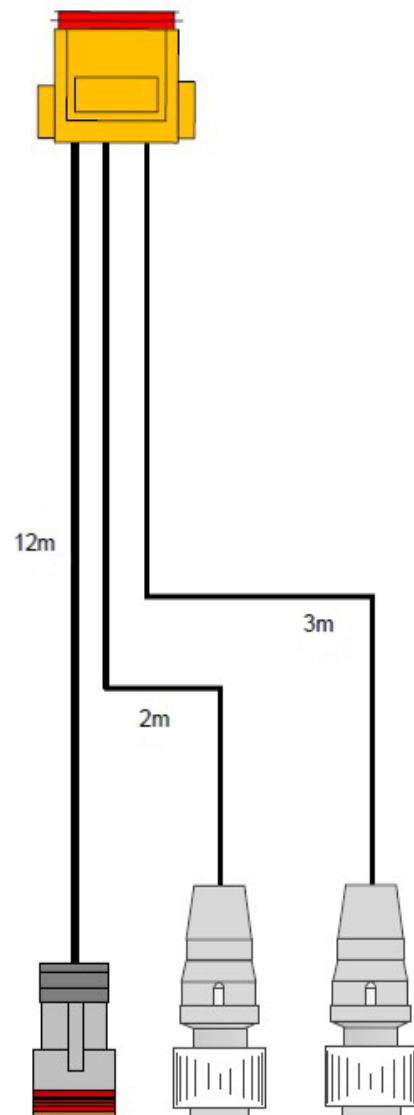
P BOOT KIT

CODE	DETAILS
170588	Knorr
KNORR	K001406



3RD MODULE CONNECTION CABLE

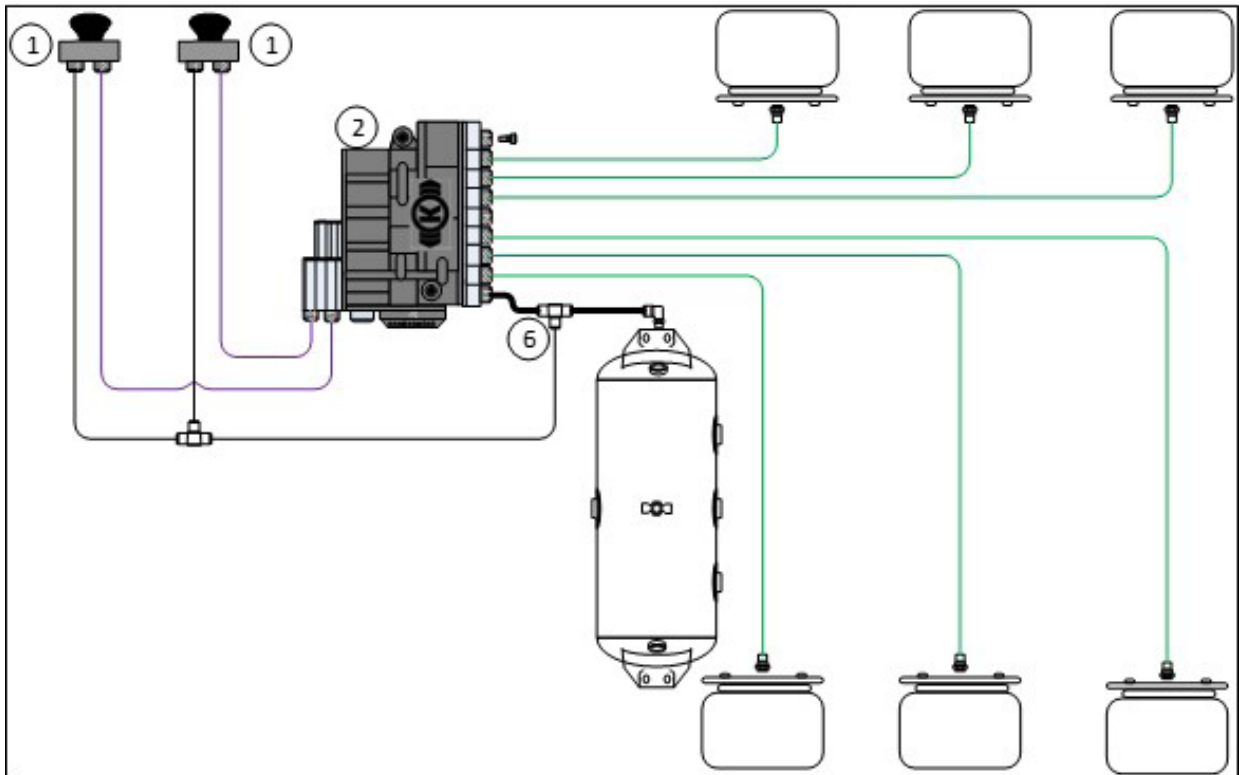
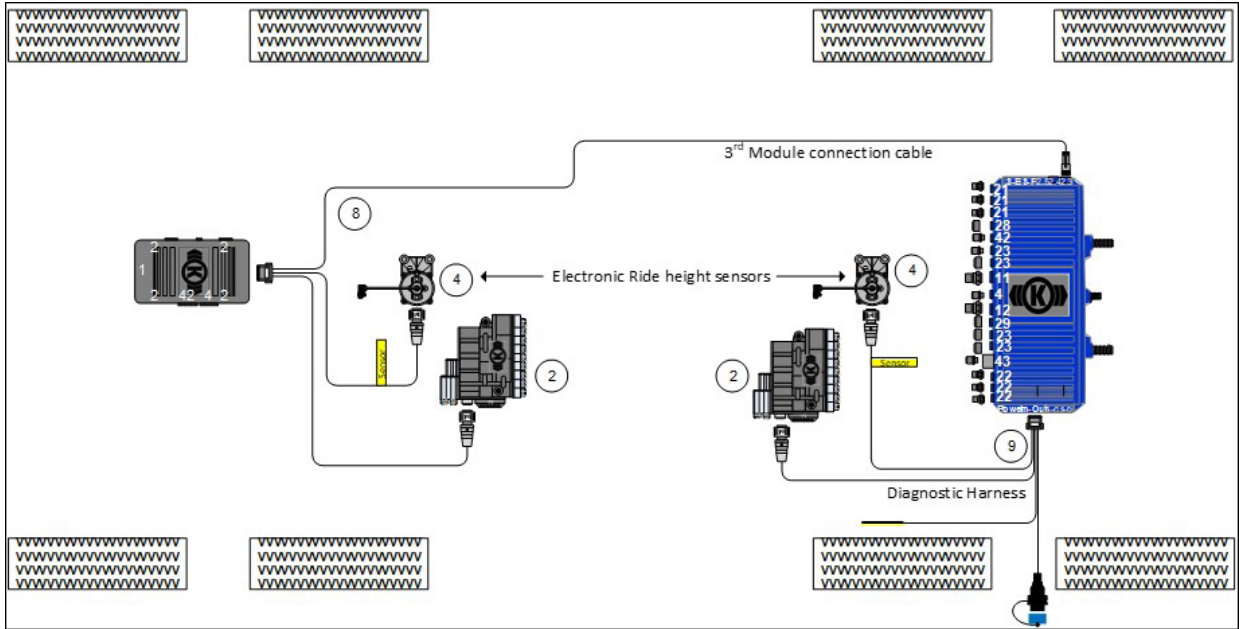
CODE	DETAILS
170337	12m with iLvl Harness.
KNORR	CV3407



DIAGNOSTICS HARNESS WITH ILVL

CODE	DETAILS
189019	If stop back up cable is required use #189019 and #189020 cable.
KNORR	K097070N00

ILVL ELECTRONIC INTELLIGENT LEVELING CONTROL SYSTEM



MLSF MECHANICAL LOAD SENSING FUNCTION



ELECTRONIC SPRING DEFLECTION SENSOR

CODE	DETAILS
170883	TEBS G2
KNORR	K026919B90



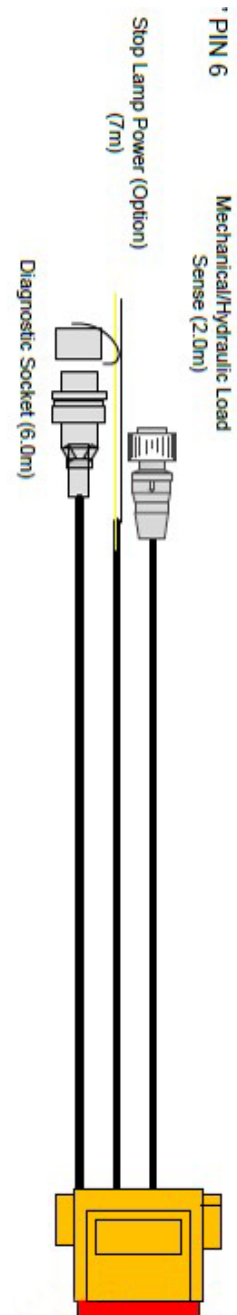
HEIGHT CONTROL LINK ARM KIT

CODE	DETAILS
730511	350mm



LINKAGE ROD

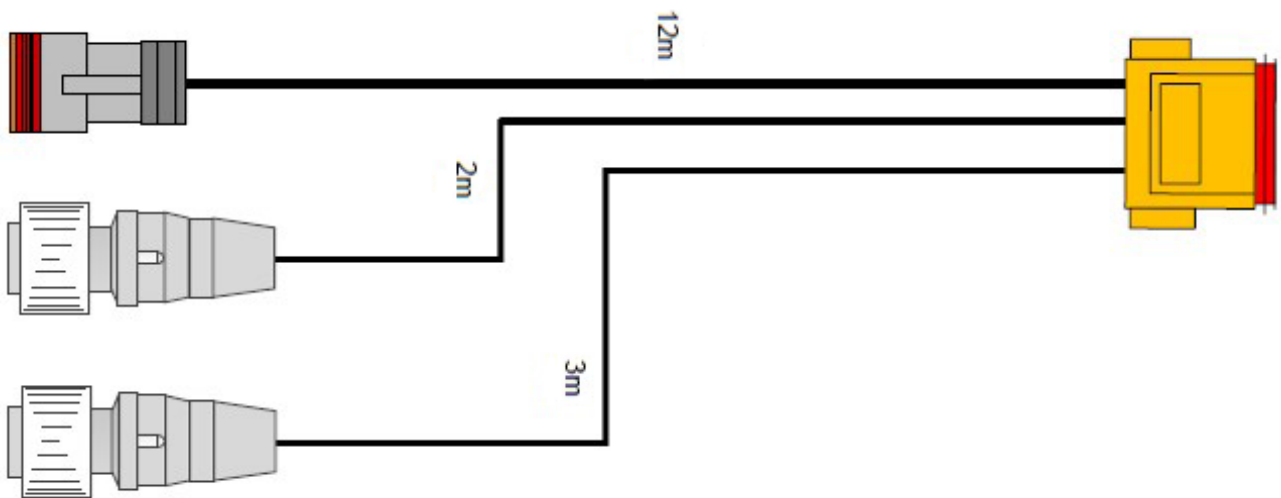
CODE	DETAILS
170589	6mm

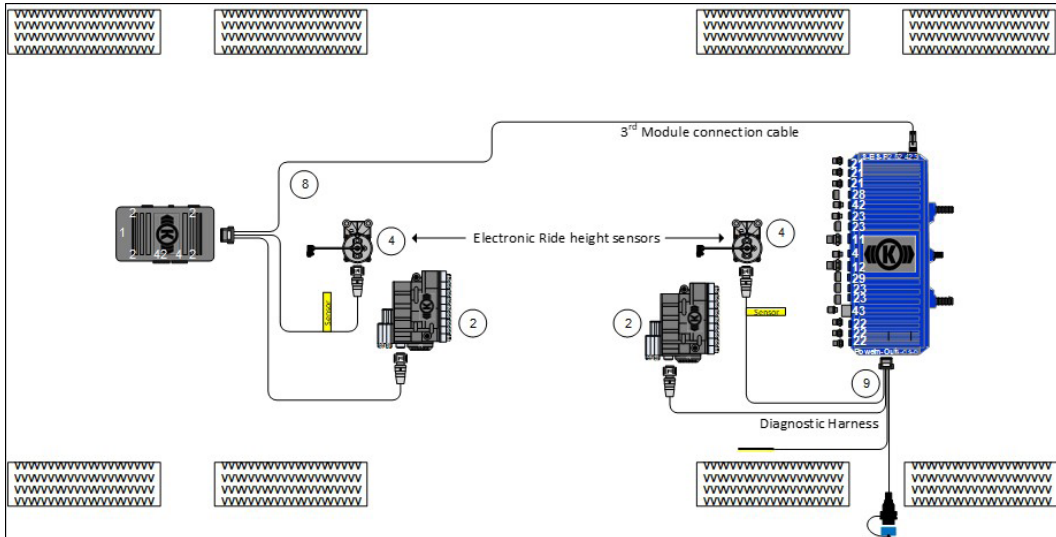




MLSF KIT

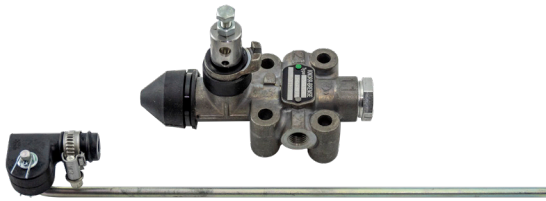
CODE	DETAILS
170587	For rear of trailers.





BRAKE PARTS

PNEUMATIC RIDE HEIGHT VALVES



PNEUMATIC RIDE HEIGHT VALVE

CODE	DETAILS
730510	Linkage kit #730511.
KNORR	K194770N00



PNEUMATIC RIDE HEIGHT VALVE

CODE	DETAILS
730421	Linkage kit #011418. With air suspension dump.



PACIFIC PNEUMATIC RIDE HEIGHT VALVE

CODE	DETAILS
730406	Linkage kit #730407. With air suspension dump.

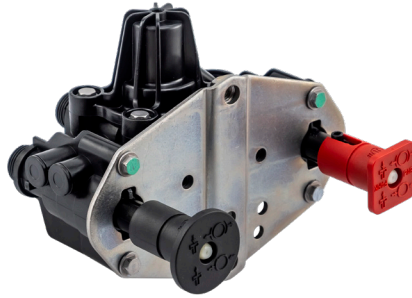
BRAKE SYSTEMS

PARK SHUNT & YARD RELEASE VALVES



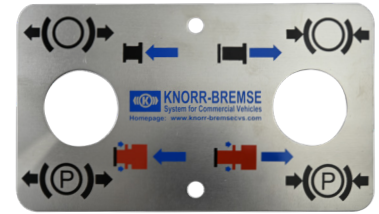
**KNORR BREMSE
PARK SHUNT VALVE**

CODE	DETAILS
170429	Only used on KB4TA or G2.0 EBS.
KNORR	K020123N00



**KNORR BREMSE
PARK SHUNT VALVE**

CODE	DETAILS
25700	Used on G2.1 and G2.2 systems only.
KNORR	K025700N00



**KNORR BREMSE
PARK SHUNT FACE PLATE**

CODE	DETAILS
170436	Suits #025700 and #170429.
KNORR	Z006845

BRAKE PARTS
RATIO VALVE



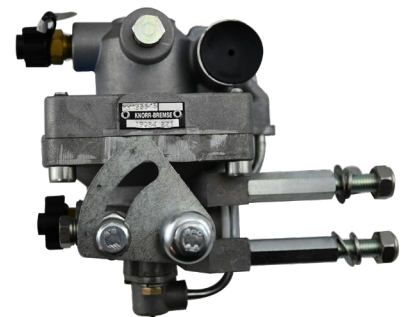
**BENDIX PP-1
YARD RELEASE VALVE**

CODE	DETAILS
170385	Can use #170388 in place of #170385.



**ABC PP-1
YARD RELEASE VALVE**

CODE	DETAILS
170388	Can use #170385 in place of #170388.



KNORR BREMSE RATIO VALVE

CODE	DETAILS
171102	Used on trailer with KB4TA or conventional brake systems.
KNORR	CV9034-100
171105	Ratio Setting Kit
KNORR	CV9034KIT

BRAKE SYSTEMS

SPRING BRAKE CONTROL VALVE



SR-5 SPRING BRAKE CONTROL VALVE

CODE	DETAILS
170135	Bendix

If there is a hole in the web this valve is an SR-5 and not an SR-2.
 If hole in web is not there check for number on the valve to confirm if you need an SR-5 or an SR-2 valve.

SR-5 SPRING BRAKE CONTROL VALVE

CODE	DETAILS
170580	Pacific

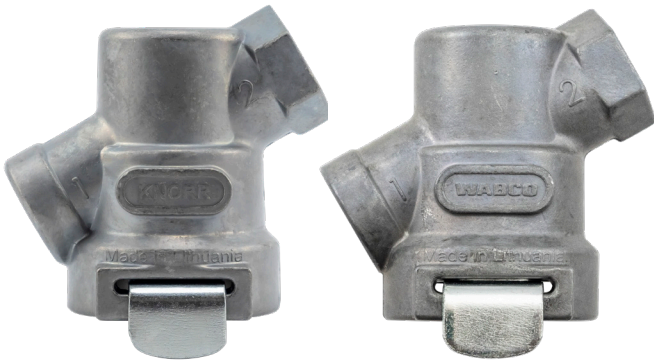
If there is a hole in the web this valve is an SR-5 and not an SR-2.
 If hole in web is not there check for number on the valve to confirm if you need an SR-5 or an SR-2 valve.

SPRING BRAKE CONTROL VALVE

CODE	DETAILS
170066	Sealco

BRAKE SYSTEMS

LINE FILTERS



LINE FILTERS

CODE	189021	170079
DETAILS	Knorr	Wabco
KNORR	I99660	

BRAKE SYSTEMS

CHARGING VALVES

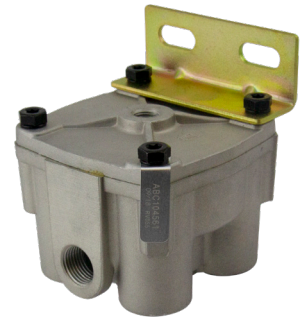


KNORR BREMSE CHARGING VALVE

CODE	179915
DETAILS	Charging Valve
KNORR	K000642

BRAKE SYSTEMS

RELAY VALVES



R-12P PILOT RELAY

CODE	170417	170123
DETAILS	Bendix	Pacific
	Used on rows of 8 and hydraulic suspension trailers.	

R-12 RELAY - 5.5PSI CRACK

CODE	174561	170218
DETAILS	Bendix	Pacific. Also used for R-12 Relay - 4.0psi Crack.
	Used on rows of 8 and hydraulic suspension trailers. Tag or washer stamped with 4.0 or 5.5 this is the crack pressure of the valve.	



R-12 RELAY - 4.0PSI CRACK

CODE	170128	170121
DETAILS	Bendix	Pacific
	Used on standard trailers to speed up spring brake release. Tag or washer stamped with 4.0 or 5.5 this is the crack pressure of the valve.	

EUROPEAN STYLE RELAY

CODE	179994
DETAILS	Knorr Bremse
	Used on standard trailers to speed up spring brake release. Tag or washer stamped with 4.0 or 5.5 this is the crack pressure of the valve.
KNORR	AC574CXY

