



WHEELS & ACCESSORIES

CATALOGUE

CURRENT AS OF AUGUST 2024





TABLE OF CONTENTS

1 WEIGHT CHEETAH ALLOY WHEELS

2 16 x 5.5 / 17.5 x 6.0

3 17.5 x 6.75 / 19.5 x 6.75

4 19.5 x 7.5

5 19.5 x 8.25 / 22.5 x 7.5

6 22.5 x 8.25

7 22.5 x 9.0 / 22.5 x 9.0 Mesh Alloy

8 22.5 x 11.75 / 22.5 x 12.25

9 MTW STEEL WHEELS

10 17.5 x 6.0 / 17.5 x 6.75

11 19.5 x 6.75 / 19.5 x 7.5

12 19.5 x 14 / 22.5 x 7.5

13 22.5 x 8.25 / 22.5 x 9.0

14 22.5 x 11.75

15 OTHER

16 MTW Steel & Chrome Rims

17 Spacer Bands

18 Valves, Extensions & O-rings

19 Sleeve Nuts

WEIGHT CHEETAH

Weight Cheetah aluminium wheels are forged from a single piece of high grade 6061 aluminium from Dubai. NADCAP-certified heat-treatment strengthens the aluminium at an aerospace level. This forged method is meticulously examined throughout the manufacturing process, surpassing the most stringent and demanding tests, to produce a strong and durable OEM level quality product. The advantages of Weight Cheetah Wheels include;

- Brilliant look and a lasting shine
- Half the weight of steel rims
- Extended brake and tyre life
- Low maintenance
- One piece forged strength
- Increase fuel economy
- Corrosion resistance
- 5 year limited warranty

WEIGHT CHEETAH ALLOY WHEELS FINISHES

Available in machined, polished and premium surface. Alloy Weight Cheetah Wheels are available in sizes of 16, 17.5, 19.5 & 22.5 inches. Weight Cheetah Premium Finish Wheels have a unique treatment that won't crack or peel, allowing the wheels to keep their shine for years on the road.



MACHINE

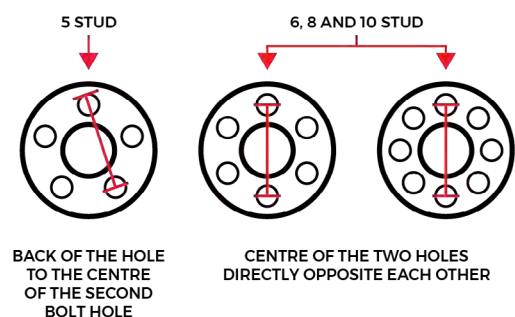
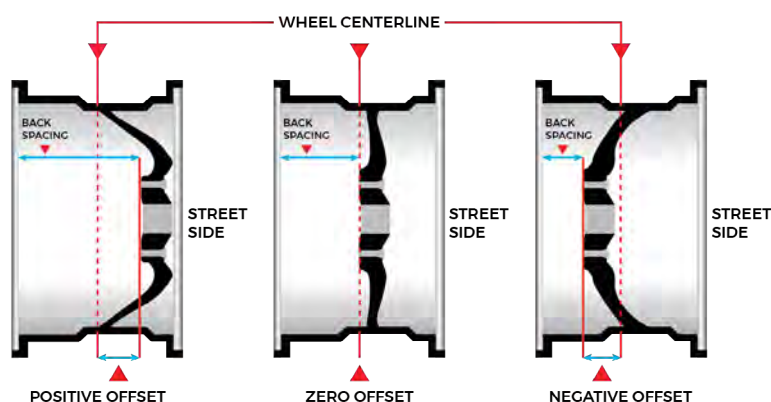


POLISHED



PREMIUM

HOW TO MEASURE OFFSET & PCD



WEIGHT CHEETAH ALLOY WHEELS



16 X 5.5 WEIGHT CHEETAH ALLOY WHEELS (in order from left to right, as above).

PART NO.	LOAD CAPACITY (KG)	WHEEL WEIGHT (KG)	STUDS	STUD HOLE (MM)	PCD (MM)	FINISH	CENTRE BORE (MM)	OFFSET
550262P	1135kg	8.9kg	5	32mm J-Budd	203mm	Machine	146mm	102 Inset
550266	1135kg	8.9kg	5	32mm J-Budd	208mm	Machine	150mm	102 Inset
550263	1699kg	8.9kg	5	32mm J-Budd	208mm	Machine	150mm	102 Inset
550264	1600kg	8.9kg	5	32mm J-Budd	208mm	Polished	150mm	102 Inset



17.5 X 6.0 WEIGHT CHEETAH ALLOY WHEELS (in order from left to right, as above).

PART NO.	LOAD CAPACITY (KG)	WHEEL WEIGHT (KG)	STUDS	STUD HOLE (MM)	PCD (MM)	FINISH	CENTRE BORE (MM)	OFFSET
550310P	2500kg	13kg	6	32mm J-Budd	222.25mm	Machine	164mm	116.5 Inset
550311P	2500kg	13.6kg	6	32mm	222.25mm	Polished Both Sides	164mm	116.5 Inset
550252P	2500kg	12.8kg	10	24mm	225mm	Machine	176mm	112.5 Inset
550260P	2500kg	12.8kg	10	24mm	225mm	Polished Both Sides	176mm	112.5 Inset
555000PN	2500kg	12.9kg	10	24mm	225mm	Premium	176mm	112.5 Inset
550267	2500kg	12.8kg	10	24mm	225mm	Machine	176mm	116.5 Inset



17.5 X 6.75 WEIGHT CHEETAH ALLOY WHEELS (in order from left to right, as above).

PART NO.	LOAD CAPACITY (KG)	WHEEL WEIGHT (KG)	STUDS	STUD HOLE (MM)	PCD (MM)	FINISH	CENTRE BORE (MM)	OFFSET
550315P	2300kg	14.3kg	6	32mm J-Budd	225.25mm	Polished Both Sides	164mm	120 Inset
550193P	2500kg	13.2kg	8	24mm	275mm	Polished Both Sides	221mm	120 Inset
550193PN	2500kg	13.2kg	8	24mm	275mm	Premium	221mm	120 Inset
550265P	2300kg	12.8kg	10	24mm	225mm	Machine	176mm	120 Inset
550261P	2300kg	12.8kg	10	24mm	225mm	Polished	176mm	120 Inset
555001PN	2300kg	12.8kg	10	24mm	225mm	Premium	176mm	112.5 Inset



19.5 X 6.75 WEIGHT CHEETAH ALLOY WHEELS (in order from left to right, as above).

PART NO.	LOAD CAPACITY (KG)	WHEEL WEIGHT (KG)	STUDS	STUD HOLE (MM)	PCD (MM)	FINISH	CENTRE BORE (MM)	OFFSET
550309P	2500kg	19kg	8	32mm	275mm	Machine	221mm	128 Inset
550289	2500kg	17kg	8	32mm	285mm	Polished Both Sides	221mm	123 Inset



19.5 X 7.5 WEIGHT CHEETAH ALLOY WHEELS (in order from left to right, as above).

PART NO.	LOAD CAPACITY (KG)	WHEEL WEIGHT (KG)	STUDS	STUD HOLE (MM)	PCD (MM)	FINISH	CENTRE BORE (MM)	OFFSET
550176P	3000kg	18kg	8	24mm	275mm	Machine	221mm	134 Inset
550177P	3000kg	18.1kg	8	24mm	275mm	Polished Both Sides	221mm	134 Inset
555005PN	3000kg	18kg	8	24mm	275mm	Premium	221mm	134 Inset
550285P	3000kg	17.8kg	8	32mm	275mm	Machine	221mm	134 Inset
550286P	3000kg	17.8kg	8	32mm	275mm	Polished	221mm	134 Inset
550300	3000kg	17.8kg	8	32mm	275mm	Polished Both Sides	221mm	134 Inset
555010PN	3000kg	18kg	8	32mm	275mm	Premium	221mm	134 Inset
550295	3000kg	17.8kg	10	24mm	225mm	Machine	176mm	134 Inset
550298P	3000kg	17.8kg	10	24mm	285mm	Machine	220mm	134 Inset



19.5 X 8.25 WEIGHT CHEETAH ALLOY WHEELS

PART NO.	LOAD CAPACITY (KG)	WHEEL WEIGHT (KG)	STUDS	STUD HOLE (MM)	PCD (MM)	FINISH	CENTRE BORE (MM)	OFFSET
550305	3150kg	18.5kg	8	32mm	275mm	Machine	221mm	146 Inset



22.5 X 8.25 WEIGHT CHEETAH ALLOY WHEELS (in order from left to right, as above).

PART NO.	LOAD CAPACITY (KG)	WHEEL WEIGHT (KG)	STUDS	STUD HOLE (MM)	PCD (MM)	FINISH	CENTRE BORE (MM)	OFFSET
550287P	3650kg	24.5kg	8	32mm J-Budd	285mm	Machine	221mm	144 Inset
550290P	3650kg	25kg	10	24mm	285mm	Machine	220mm	144 Inset
550291P	3650kg	24kg	10	24mm	285mm	Polished Both Sides	220mm	144 Inset
555030PN	3650kg	24.5kg	10	24mm	285mm	Premium	220mm	144 Inset
550284P	3550kg	24kg	10	24mm	335mm	Machine	281mm	144 Inset
550288P	3350kg	25.7kg	10	24mm	335mm	Polished Both Sides	281mm	144 Inset
555020	4000kg	25kg	10	24mm	335mm	Premium	281mm	144 Inset
550280P	3550kg	24kg	10	32mm	335mm	Machine	281mm	144 Inset
550281P	3550kg	24kg	10	32mm	335mm	Polished Both Sides	281mm	144 Inset
550282	3550kg	24kg	10	32mm	335mm	Outer Pol	281mm	144 Inset
555025PN	4000kg	25kg	10	32mm	335mm	Premium	281mm	144 Inset



22.5 X 9.0 WEIGHT CHEETAH ALLOY WHEELS (in order from left to right, as above).

PART NO.	LOAD CAPACITY (KG)	WHEEL WEIGHT (KG)	STUDS	STUD HOLE (MM)	PCD (MM)	FINISH	CENTRE BORE (MM)	OFFSET
550293	4000kg	27kg	10	24mm	285mm	Machine	220mm	152 Inset
550294P	4000kg	26kg	10	24mm	335mm	Polished	281mm	151.5 Inset
559500P	4125kg	27kg	10	32mm	335mm	Polished	281mm	152 Inset



22.5 X 9.0 WEIGHT CHEETAH ALLOY WHEELS - FRONT FACE OFFSET

(in order from left to right, as above).

PART NO.	LOAD CAPACITY (KG)	WHEEL WEIGHT (KG)	STUDS	STUD HOLE (MM)	PCD (MM)	FINISH	CENTRE BORE (MM)	OFFSET
550009P	5000kg	26.5kg	10	26mm	285mm	Polished	220mm	106 Inset
550009PN	5000kg	26.5kg	10	26mm	285mm	Premium	220mm	106 Inset
550008P	5000kg	25kg	10	32mm Retro	335mm	Polished	280mm	79 Inset
550008PN	5000kg	25kg	10	32mm Retro	335mm	Premium	280mm	79 Inset



22.5 X 11.75 WEIGHT CHEETAH ALLOY WHEELS (in order from left to right, as above).

PART NO.	LOAD CAPACITY (KG)	WHEEL WEIGHT (KG)	STUDS	STUD HOLE (MM)	PCD (MM)	FINISH	CENTRE BORE (MM)	OFFSET
550270	4500kg	25.6kg	10	26mm	335mm	Machine	281mm	Zero
550271P	4500kg	25.6kg	10	26mm	335mm	Polished	281mm	Zero
550275P	4500kg	25.6kg	10	24mm	335mm	Machine	281mm	120 Inset
550276P	4500kg	28kg	10	24mm	335mm	Polished	281mm	120 Inset
550279	4500kg	25.4kg	10	32mm	335mm	Machine	281mm	120 Inset
550278P	4500kg	25.4kg	10	32mm Retro	335mm	Polished	281mm	120 Inset
550278PN	4500kg	25.4kg	10	32mm	335mm	Premium	281mm	120 Inset



22.5 X 12.25 WEIGHT CHEETAH ALLOY WHEELS

PART NO.	LOAD CAPACITY (KG)	WHEEL WEIGHT (KG)	STUDS	STUD HOLE (MM)	PCD (MM)	FINISH	CENTRE BORE (MM)	OFFSET
550273	5170kg	30.2kg	10	24mm	285mm	Polished	221mm	70 Inset

MTW STEEL WHEELS

INDUSTRY STANDARD



INDUSTRY STANDARD STEEL WHEELS

MTW has set the industry standard for steel wheel quality, Our Wheels are made of high-grade steel that will last. Made tough, these wheels have a longer lasting life and can survive in harsh conditions. The wheels come in sizes of 17.5, 19.5 & 22.5. Also available are Heavy Duty Steel Wheels, Demountable rims & Spacer Bands.

WHEELS CATALOGUE

MTW STEEL WHEELS



17.5 X 6.0 MTW STEEL WHEELS (in order from left to right, as above).

PART NO.	LOAD CAPACITY (KG)	WHEEL WEIGHT (KG)	STUDS	STUD HOLE (MM)	PCD (MM)	FINISH	CENTRE BORE (MM)	OFFSET
550045	1850kg	26kg	6	18mm	205mm	Painted	161mm	Zero
550314	2725kg	25.4kg	6	32mm	222.25mm	Painted	164mm	135mm
550043	2725kg	24kg	10	26mm	225mm	Painted	176mm	112.5mm
550444	2725kg	25kg	10	26mm	225mm	Chrome	176mm	112.5mm



17.5 X 6.75 MTW STEEL WHEELS (in order from left to right, as above).

PART NO.	LOAD CAPACITY (KG)	WHEEL WEIGHT (KG)	STUDS	STUD HOLE (MM)	PCD (MM)	FINISH	CENTRE BORE (MM)	OFFSET
550316-OGREEN	2725kg	25kg	6	32mm J-Budd	222.25mm	Painted	164mm	135 Inset
550042	2725kg	25.8kg	10	26mm	225mm	Painted	176mm	145 Inset
550445	3150kg	25kg	10	24mm	225mm	Chrome	176mm	135 Inset



19.5 X 6.75 MTW STEEL WHEELS (in order from left to right, as above).

PART NO.	LOAD CAPACITY (KG)	WHEEL WEIGHT (KG)	STUDS	STUD HOLE (MM)	PCD (MM)	FINISH	CENTRE BORE (MM)	OFFSET
550158	2500kg	32kg	6	32mm J-Budd	222.22mm	Painted	164mm	152mm
550171	2500kg	28kg	8	32mm J-Budd	285mm	Painted	221mm	147mm



19.5 X 7.5 MTW STEEL WHEELS (in order from left to right, as above).

PART NO.	LOAD CAPACITY (KG)	WHEEL WEIGHT (KG)	STUDS	STUD HOLE (MM)	PCD (MM)	FINISH	CENTRE BORE (MM)	OFFSET
550157	2500kg	31kg	8	24mm	275mm	Painted	221mm	156mm
550059	2500kg	31kg	8	26mm	275mm	Cera Chrome	221mm	151mm
550446	2860kg	33kg	8	26mm	275mm	Chrome	221mm	151mm
550155-OGREEN	2500kg	32.2kg	10	24mm	225mm	Painted	176mm	156mm
550159	2725kg	29kg	10	24mm	285mm	Painted	220mm	152mm



19.5 X 14 MTW STEEL WHEELS

PART NO.	LOAD CAPACITY (KG)	WHEEL WEIGHT (KG)	STUDS	STUD HOLE (MM)	PCD (MM)	FINISH	CENTRE BORE (MM)	OFFSET
550169		42kg	10	26mm	335mm	Painted	281mm	120mm



22.5 X 7.5 MTW STEEL WHEELS

PART NO.	LOAD CAPACITY (KG)	WHEEL WEIGHT (KG)	STUDS	STUD HOLE (MM)	PCD (MM)	FINISH	CENTRE BORE (MM)	OFFSET
550065	3250kg	39kg	10	24mm	335mm	Painted	281mm	152mm



22.5 X 8.25 MTW STEEL WHEELS (in order from left to right, as above).

PART NO.	LOAD CAPACITY (KG)	WHEEL WEIGHT (KG)	STUDS	STUD HOLE (MM)	PCD (MM)	FINISH	CENTRE BORE (MM)	OFFSET
550501	3625	45.5kg	8	32mm J-Budd	285mm	Painted	221mm	165mm
550146-OGREEN	3355	36.5kg	10	24mm	285mm	Painted	220mm	165mm
550825	3535	39kg	10	24mm	335mm	Painted	176mm	145mm



22.5 X 9.00 MTW STEEL WHEELS (in order from left to right, as above).

PART NO.	LOAD CAPACITY (KG)	WHEEL WEIGHT (KG)	STUDS	STUD HOLE (MM)	PCD (MM)	FINISH	CENTRE BORE (MM)	OFFSET
550900	4500kg	45	10	24mm	335mm	Painted	281mm	175mm
550500-OGREEN	4760kg	45	10	24mm	285mm	Painted	220mm	175mm
550520-OGREEN	4090kg	55	10	24mm	285mm	Painted	285mm	175mm
550510-OGREEN	4090kg	48	10	24mm	335mm	Painted	284mm	175mm

550500-OGREEN / 550520-OGREEN / 550510-OGREEN ARE HEAVY DUTY WITH 16MM THICK FLANGE FACE



22.5 X 11.75 MTW STEEL WHEELS (in order from left to right, as above).

PART NO.	LOAD CAPACITY (KG)	WHEEL WEIGHT (KG)	STUDS	STUD HOLE (MM)	PCD (MM)	FINISH	CENTRE BORE (MM)	OFFSET
550140	4500kg	42.8	10	24mm	285mm	Painted	221mm	120mm
550144	4500kg	47	10	24mm	335mm	Painted	281mm	120mm
550145-OGREEN	4500kg	48	10	24mm	335mm	Painted	281mm	Zero

WHEELS
RIMS



MTW DEMOUNTABLE/ARTILLERY STEEL RIMS (in order from left to right, as above).

PART NO.	SIZE	RIM WEIGHT (KG)	RIM EDGE
550060	17.5 x 6.0	19.2kg	
550041	17.5 x 6.75	21kg	
550066	22.5 x 8.25	31kg	
550053	22.5 x 9.00	36kg	15mm To Rim Edge
550063	22.5 x 9.00	43kg	35mm To Rim Edge
550068	22.5 x 11.75	41kg	80mm Offset



MTW CHROME PLATED STEEL RIMS

PART NO.	SIZE	RIM WEIGHT (KG)
550085PC	22.5 x 8.25	38kg

WHEELS

SPACER BANDS



MTW WHEEL SPACER BANDS (in order from left to right, as above).

PART NO.	SIZE	TYPE	FINISH
550074A	15 x 3.0	Flat	Silver Painted
550074	15 x 3.375	Flat	Silver Painted
550081	15 x 3.625	Flat	Silver Painted
550086	15 x 4.0	Flat	Silver Painted
550086-OGREEN	15 x 4.0	Corrugated	Silver Painted
550091	20 x 3.625	Flat	Silver Painted
550101	20 x 4.0	Flat	Silver Painted
550106	20 x 4.25	Flat	Silver Painted
550117-OGREEN	20 x 4.5	Corrugated	White Painted
550111	20 x 4.5	Flat	Silver Painted

WHEELS

SLEEVE NUTS



SINGLE WHEELS



TWIN WHEELS

PART NO.	THREAD	NUT	THREAD SIZE
550383	Left Hand	Single Wheel (11mm Shaft Length)	M18 x 1.5 (Jap Budd)
550382	Right Hand		
550381	Left Hand	Twin Wheel (28 Shaft Length)	
550380	Right Hand		
550362	Left Hand	Single Wheel (11mm Shaft Length)	M19 x 1.5 (Jap Budd)
550361	Right Hand		
550364	Left Hand	Twin Wheel (26mm Shaft Length)	
550363	Right Hand		
550348	Left Hand	Single Wheel (11mm Shank)	M20 x 1.5 (Jap Budd)
550349	Right Hand		
550346	Left Hand	Twin Wheel (26mm Shaft Length)	M20 x 1.5 (Jap Budd)
550347	Right Hand		
550392	Left Hand	Twin Wheel (31mm Shaft Length)	
550393	Right Hand		
550355PC	Left Hand	Twin Wheel (40mm Shaft Length)	M20 x 1.5 (Jap Budd) with Plastic Cap
550356PC	Right Hand		
550366	Left Hand	Single Wheel (11 Shaft Length)	M20 x 1.5 ISO
550359	Right Hand		
550367	Left Hand	Twin Wheel (30mm Shaft Length)	
550360	Right Hand		
550357	Left Hand	Single Wheel (13mm Shaft Length)	M22 x 1.5 ISO
550350	Right Hand		
550358	Left Hand	Twin Wheel (36 Shaft Length)	
550351	Right Hand		
550354	Left Hand	Single Wheel (13mm Shaft Length)	M24 x 1.5 (Jap Budd)
550353	Right Hand		
550208	Right Hand	Single Wheel (12mm Shaft Length)	7/8 x 11 PSF ISO
550209	Right Hand	Twin Wheel (37mm Shaft Length)	7/8 x 11 PSF ISO
550202	Right Hand	Single Wheel (14mm Shaft Length)	7/8 x 14 UNF ISO
550203	Right Hand	Twin Wheel (37mm Shaft Length)	7/8 x 14 UNF ISO

WHEELS

VALVES, EXTENSIONS & O-RINGS



TYRE VALVES (SCHRADER)

(in order from left to right, as above).

PART NO.	LENGTH (MM)	RIM HOLE (MM)	BENDING ANGLE
10542	93mm	9.7mm	27°
10565	94mm	16mm	147°
10546	95mm	15.9mm	Straight
11543	117mm	9.7mm	27°
10545	127mm	15.9mm	Straight

VALVE EXTENSIONS

(in order from left to right, as above).

PART NO.	MATERIAL	LENGTH (MM)
10562	Brass	75mm
10543	Brass	84mm



O-RINGS

PART NO.	MATERIAL
410449	NBR Nitrile N90
CROSS SECTION (IMPERIAL)	CROSS SECTION (METRIC)
.375 x .071 Inches	9.63mm x 1.82mm



SCHRADER VALVE CORE

PART NO.	DIMENSIONS (IMPERIAL)	DIMENSIONS (METRIC)
10543	0.76 x 0.027 Inches	19.3 x 0.3mm

WHEELS

WHEEL NUT INDICATORS



CHECKLINK
DUAL WHEEL NUT INDICATORS

PART NO.	TO SUIT
551383	30mm
550370	32mm



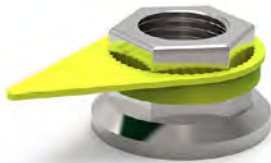
DUSTITE LR
WHEEL NUT INDICATORS

PART NO.	TO SUIT
551380	19mm
551381	21mm



YELLOW HEXCHEX
WHEEL NUT INDICATORS

PART NO.	TO SUIT
551390	30-38mm
551391	38-50mm



YELLOW CHECKPOINT
WHEEL NUT INDICATORS

PART NO.	TO SUIT
551379	19mm
551377	21mm
550376	23mm
TA9124	24mm
550326	26mm
550377	27mm
550387	30mm
550368	31mm
550372	32mm
550373	33mm
550375	34mm
551375	35mm
550386	36mm
550374	38mm
550385	41mm
550384	46mm



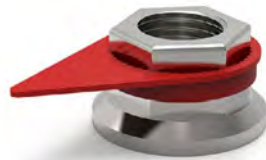
DUSTITE LR
WHEEL NUT INDICATORS

PART NO.	TO SUIT
550390	32mm
550389	33mm



YELLOW HEXCHEX
WHEEL NUT INDICATORS

PART NO.	TO SUIT
551390	30-38mm
551391	38-50mm



RED CHECKPOINT
WHEEL NUT INDICATORS

PART NO.	TO SUIT
550395	30mm
550388	31mm
551373	32mm
550378	33mm
551382	35mm
550379	41mm

FUNCTION

The Checkpoint visually indicates wheel nut movement. It will also melt to highlight any overheating issues with the wheel.

BENEFITS

Improves the safety of nut fittings. Enables quick and easy visual checks and monitoring. Reduces maintenance costs by saving time and money.

APPLICATION

Mainly for commercial vehicles such as trucks, agricultural vehicles, dangerous goods transporters, etc. It is also used in the industrial sector, and wherever safety critical fasteners can loosen due to heavy vibrations.



